



## Rome Center for Peace and Religious Studies

Arch 4100, 4102, 5101, 5116

George E. Hascup with Davide Marchetti

AAP Cornell in Rome, Palazzo Lazzaroni

Spring 2013

**Rationale, Course Aims and Objectives:** At the eastern entrance of the “*Ara Pacis*” altar in Rome is a seated goddess in classical Greek-style drapery, her identity is unknown, but some suggest it could be “*Pax*”, the goddess of peace. Upon her lap are two babies, they are indicative of fertility and pro-family legislation. At her feet is the Earth in bloom and abundance, at her side are the personification of salt and fresh water.

“*Pax Romana*” or “*Pax*” (as a Roman divinity) or “*Pax Augusti*” (peace given by the emperor to the Roman world) which in Italian means Roman Peace, is a long period of peace imposed on countries in the Roman Empire after the seizure of power by Augustus. This term derives from the fact that the Roman domination and its legal system pacified regions that had suffered the disputes

between rival leaders. It was a time of relative tranquility in which Rome did not suffer nor the great civil wars nor serious invasions. So this word become customary to denote the concept of roman rule of the known world as a guarantee of universal peace and harmony.

We can say with certainty that the Romans, in spite of black spots in their history, with the greatness of their spirit and the practicality of their genius, succeeded in creating a solid unity of the world, which made easy the movements of people and the exchange of material and spiritual goods through the consular roads and security order laws.

The “*Pax Romana*”, which ensured the happy coexistence of different traditions, habits, cultures and religions of pacified people, enables us to understand our future from the past.

The project for the Rome studio this term will reinterpretate this abstract concept and make it “buildable” through the reading and understanding of Rome’s history, both social and architecture.

Students will design a multifunctional building comprised of public spaces, libraries and study areas, meeting rooms and a conference hall.

They will locate their project on a site (free of any building and used as a public square/garden) close to the central archaeological area of Rome (10 minutes walk from Palazzo Lazzaroni and within view of the Colosseum).

### **Studio Schedule:**

Students will work in one of two assigned studio sections for the duration and have interaction with all two studio instructors. There will be many individual desk-crits as well as group reviews where students will present their work in the lecture hall.

Jan 18	Project Introduction (site analysis, site base materials), studio sections organized
Jan 21	Site study (walk-in) – Introductory lecture (History and Topography)
Jan 24	Site model (scale 1:500) & 3d digital site model deadline
Jan 28	Studio Section studies
Jan 31	Studio Section studies
<hr/>	
Feb 4	<b><u>1<sup>st</sup> Review:</u></b> 1-2 charrette schemes, study model/s, sketches
Feb 7-10	Southern Italy field trip
Feb 11	Studio Section studies – scheme development
Feb 14	Studio Section studies – scheme development
Feb 18	Studio Section studies – scheme development
Feb 21	<b><u>2<sup>nd</sup> Review:</u></b> Plans/sections 1:500, study model updated
Feb 25	Studio Section studies - field trip lecture (architecture in Switzerland & Italy)
Feb 26-Mar 3	North Italy & Switzerland field trip
<hr/>	



March 4	Studio Section studies – scheme development
March 7	Studio Section studies – scheme development <u>Lecture Series: Pablo Castro Estévez (OBRA Architects)</u>
March 11	Studio Section studies – scheme development
March 14	<b><u>Mid Term Review</u></b> (with invited jurors): Plans/sections 1:500, perspective views, model 1:500 (to be inserted in the site model)
March 16-24	Spring Break
March 25	Studio Section studies - scheme realization
March 28	Studio Section studies - scheme realization
<hr/>	
April 1	Studio Section studies - scheme realization
April 4	Studio Section studies - scheme realization
April 8	<b><u>Pre-Final Review:</u></b> Final design development, Plans/sections 1:200, perspective views, diagrams, model 1:500
April 11-14	Central Italy field trip
April 15	Studio Section studies - scheme realization, plans & sections Film showing
April 18	Studio Section studies - scheme realization, plans & sections <u>Lecture Series: Roland Halbe Photographer</u>
April 22	Studio Section studies - scheme realization, plans & sections
April 25	Studio Section studies - scheme realization, perspectives & model
April 29	Studio Section studies - scheme realization, perspectives & model
<hr/>	
May 2	Studio Section studies – Final presentation boards layout preparation
May 4-5	Plotting
May 6-7	<b><u>Final Reviews</u></b>
May 9	Exhibition

**AAP CORNELL IN ROME SPRING 2013 - ARCHITECTURE STUDIO**

George E. Hascup + Davide Marchetti

Project Theme: Rome Center for Peace and Religious Studies

Plot area: ~10.000sqM - Usable plot area (as existing) ~4.000sqM - Total project area 20.000sqM - FSI ~2

	GFA Gross floor area	% tot.area		
<b>A. Public spaces</b>				
A1 Concourse, Meeting Spaces and Ancillary services	800	4,0%		
A2 Multipurpose hall (800 people)	700	3,5%		
A3 Exhibition spaces (Perm/temp)	700	3,5%		
			<b>2.200</b>	<b>11,00%</b>
<b>B Recreational services</b>				
B1 Restaurant (incl.Kitchen/storage)	400	2,0%		
B2 Caffetteria	200	1,0%		
B3 Bookshop	300	1,5%		
			<b>900</b>	<b>4,50%</b>
<b>C Library &amp; Study Center + Public Services</b>				
C1 Welcome center	800	4,0%		
C2 Community library	1.300	6,5%		
C3 Children Services	1.300	6,5%		
C4 Teen zone	500	2,5%		
C5 Fiction, Newspapers and Magazines	1.700	8,5%		
C6 Technology, communications and digital services	1.700	8,5%		
C7 Learning Centre A: Roman Catholic & Orthodox Catholic	900	4,5%		
C8 Learning Centre B: Catholic Protestant	900	4,5%		
C9 Learning Centre C: Islam	900	4,5%		
C10 Learning Centre D: Buddhism	900	4,5%		
C11 Learning Centre E: Hebraism	900	4,5%		
C12 Learning Centre F: Hinduism	900	4,5%		
C13 Learning Centre G: Others	900	4,5%		
			<b>13.600</b>	<b>68,00%</b>
<b>D Cultural services</b>				
C1 The City of Rome Heritage Gateway	1.300	6,5%		
			<b>1.300</b>	<b>6,50%</b>
<b>E Library support services</b>				
D1 Library administration	800	4,0%		
D2 Material handling and Operations	1.200	6,0%		
			<b>2.000</b>	<b>10,00%</b>
<b>TOTAL BUILDING GROSS AREA</b>	<b>20.000</b>	<b>100,0%</b>	<b>20.000</b>	<b>100%</b>

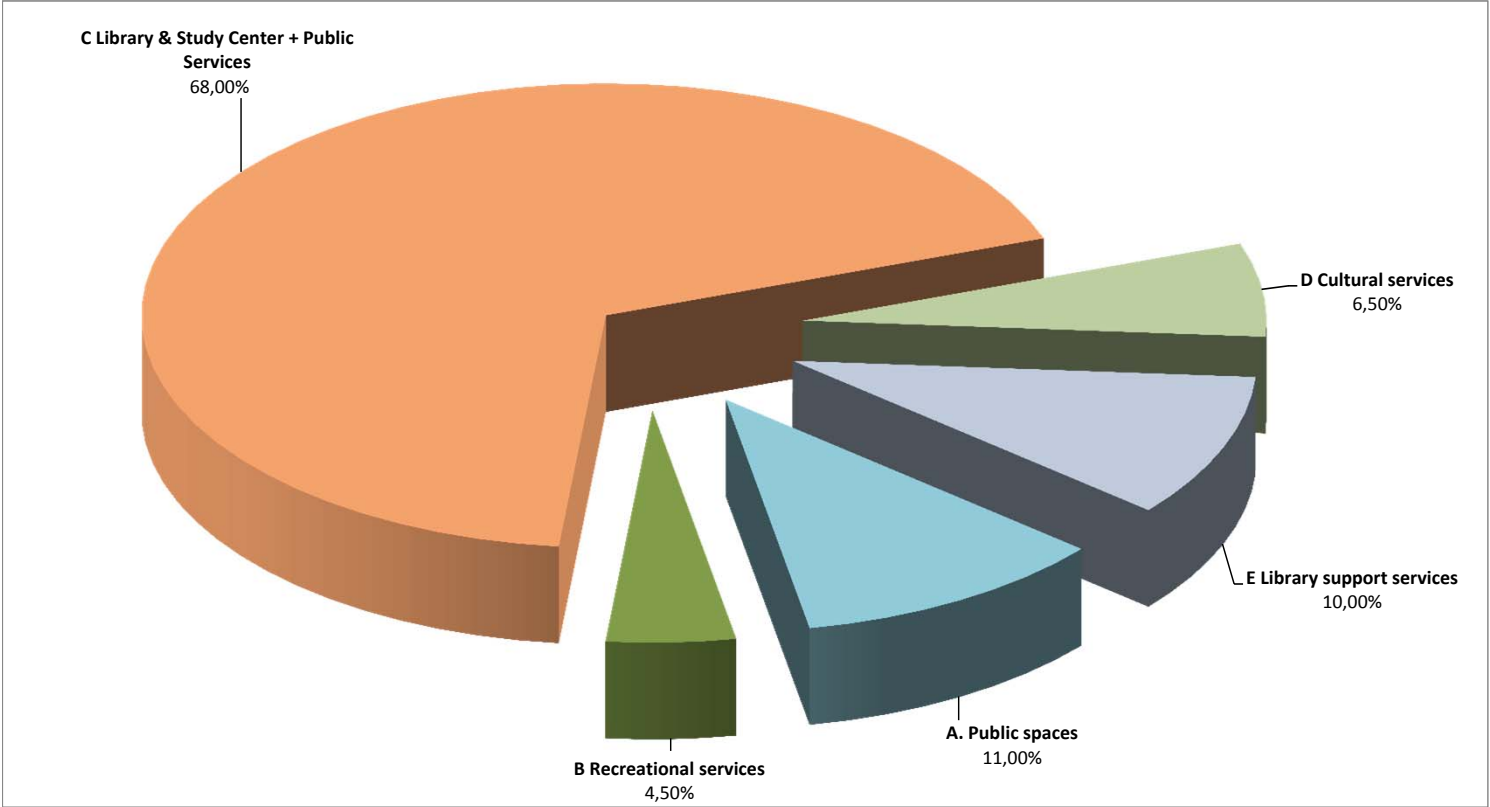
**F Parking Areas (40 lots)**

<b>SHARED/TECHNICAL AREA (=30% OF GROSS AREA)</b>	<b>6.000</b>	<b>30,0%</b>	<b>6.000</b>	<b>30%</b>
---	--------------	--------------	--------------	------------

**Gross Floor Area:** the sum of the Net Floor Area and the Shared/Technical Floor Area.

**Shared/Technical Floor Area:** the area of complementary spaces necessary for the activities undertaken in the various areas. For example: connecting and auxiliary spaces, utilities shafts, technical rooms, space occupied by structures, partition walls, load bearing walls.





## FUNCTIONAL STRUCTURE

The program is organized into the following components:

### **A. Public Spaces**

#### A1 Concourse, Meeting Spaces and Ancillary Services

#### A1b Multipurpose hall

#### A1c Exhibition spaces

This component is the most public and the most active face of facility and the building operation. It will accommodate an auditorium and meeting complex and a series of spaces and functions, including a Bookshop, that form a transitional zone between the public urban domain and the inner world of the building spaces.

### **B. Recreational services**

#### B1 Restaurant

#### B2 Caffetteria

#### B3 Bookshop

### **C. Library & Study Center + Public services**

#### C1 Welcome Centre

The Welcome Centre is the public's formal point of contact with the building. This component accommodates the single point of public access and egress and the main "front hall" entry into the building space. It includes visitor greeting, orientation, user education and newcomer services, cards and accounts, borrowing and returning of library and study materials, with a focus on self-service, and other "front-door" library user services.

#### C2 Community Library

This component will be a familiar and comfortable community gathering place, the living room of the Study Center and the Library of the downtown community. It accommodates a browsers' library oriented to the discovery of new and topical materials and to the enjoyment of casual recreational reading. Resources include books, magazines, newspapers, CDs and DVDs on bookstore-type displays of various heights and configurations designed to maximize user browsing.



### C3 Children's Services

This component is the central resource for children's materials and services for the building System and is largely a library within the Library. It accommodates children's collection resources and provides a rich variety of study, learning and program environments for children under thirteen years of age. It also provides caregivers with access to collection resources, including a parenting collection, and reference services.

### C4 Teen Zone

This component provides a visible base for teens at the Center and will provide teens with an initial connecting point to the Library and a bridge to the balance of the Library's resources. It accommodates the fiction collection, selected non-fiction items, and a range of study, learning and socializing environments for teens ages 13-18.

### C5 Fiction, Newspapers and Magazines

This component combines two diverse collection areas, accommodating the fiction collection and associated public accommodation, and the main newspaper and magazine collection in unbound, bound and microform formats. While it continues some of the informal elements introduced in the Community Library, it is a quieter environment, particularly the Fiction area, which is a celebration of the book. The World News Centre is also located in this component.

This component also accommodates central staff amenity space, due to the anticipated central location of this component within the Library.

### C6 Technology, Communications and Digital Services

This component is the main focus for electronic information systems accessing the electronic library collections of the Library. A highly active component, it includes a mix of public, non-public staff related, and collaborative functions. It includes the main information commons, exploratory laboratories, the main audiovisual collections as well as staff training activities and the office needs of Library web services & systems, City IT services, communication and marketing, Friends of the Library, and the training unit.

### C7-C13 The Learning Centre

The Seven Learning Centers components provide a base for both collaborative and individual life-long learning and inspiration for the building users to explore new topics and ideas. They accommodate a part of the library collection, focused on the single Religion environment. Beside the classified arrangement of the materials, there are subject-oriented displays about current issues and featured topics. They also provide a stimulating learning place where people find the information they need and get answers to their questions. They also include a services centre for languages and literacy, local history and genealogy.

## **D. Cultural Services**

### D1 The City Of Rome Heritage Gateway

This component will provide exhibit, educational, and visitor information services that tell the story of the City of Rome. This will be a space where archival material and artefacts from the City's collections, community-based museums, other organizations and community members will be made available to the public.

## **E. Library Support Services**

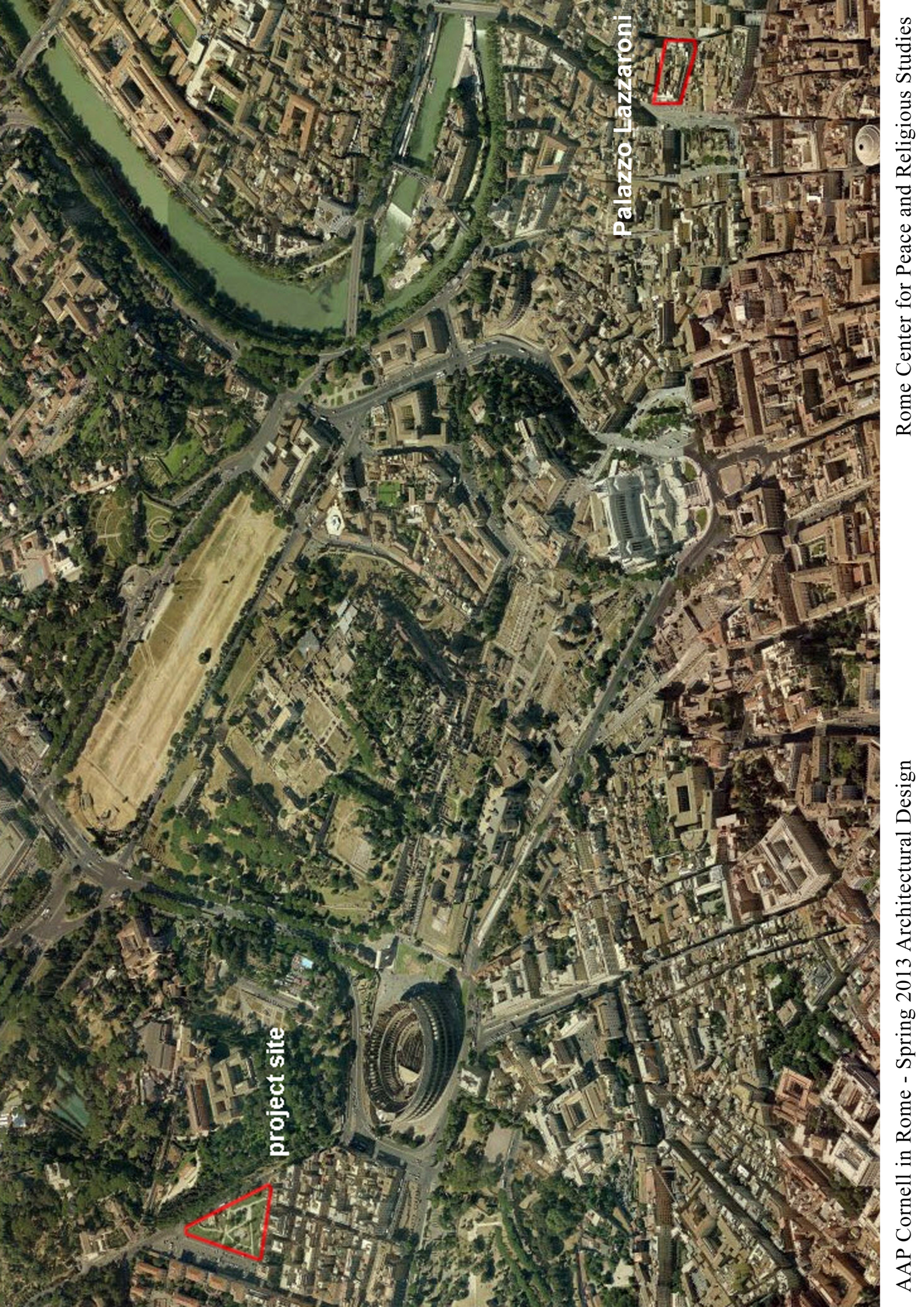
### E1 Library Administration

This component accommodates selected administrative functions of the Ottawa Public Library System, including the office of the Library Board and the Ottawa Public Library Foundation. It also includes the office of the City Librarian, offices for senior managers, and offices for managers of the Central Library, the planning unit, and capital projects unit.

### E2 Materials Handling and Operations

This component accommodates the centralized shipping and receiving functions, including the materials sorting room, the mailroom, building operations and maintenance facilities, and storage facilities.

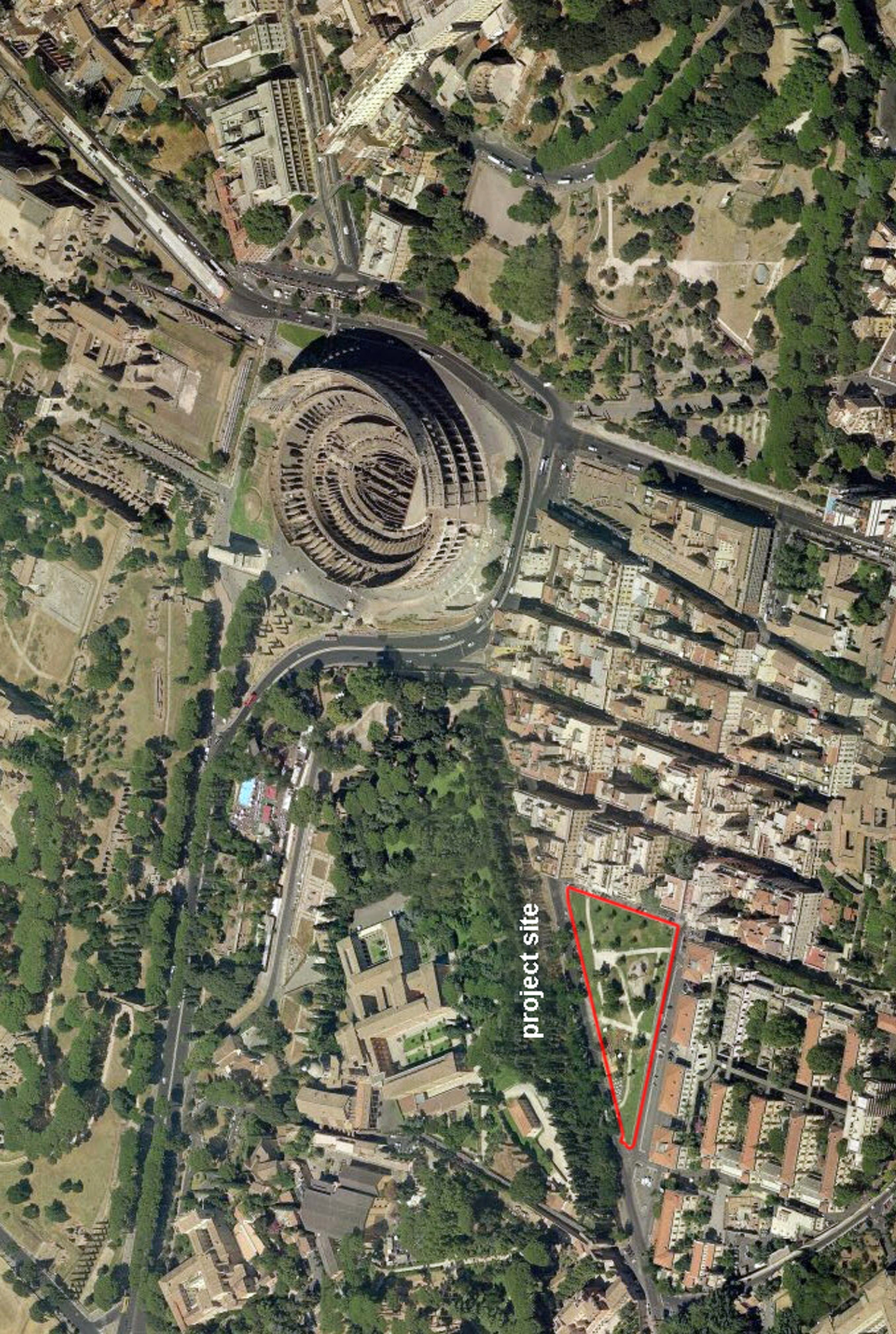




project site

Palazzo Lazzaroni





project site





project site





project site

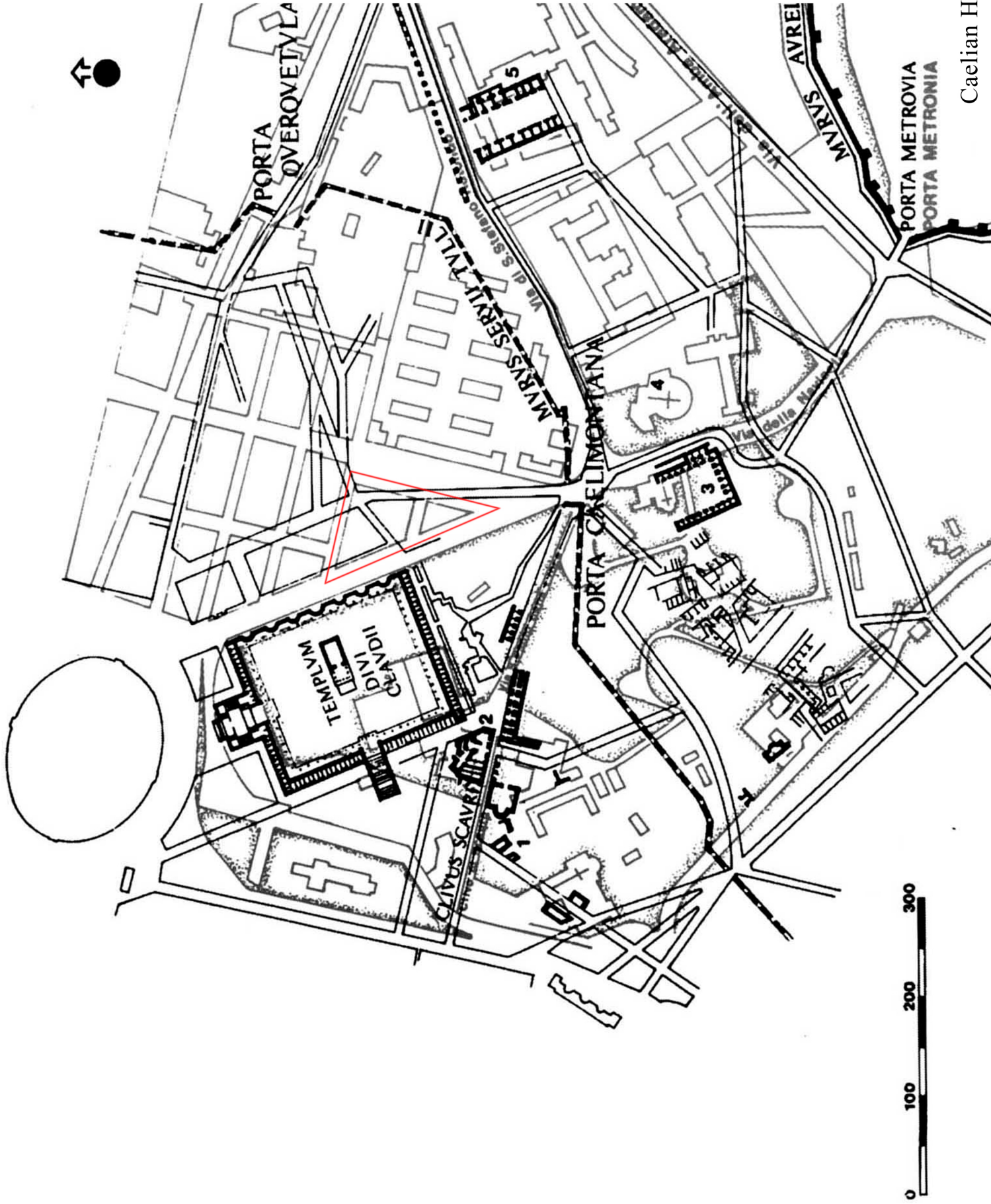


SITE MODEL BOUNDARY SCALE 1:500 (1m = 1mt)

Plot area= 10.000sqM  
Usable plot area= ~4.000sqm (40%)  
Floor area ratio= 1.5-2.0  
Height restrictions= 15-20m  
(as exist. bldgs)

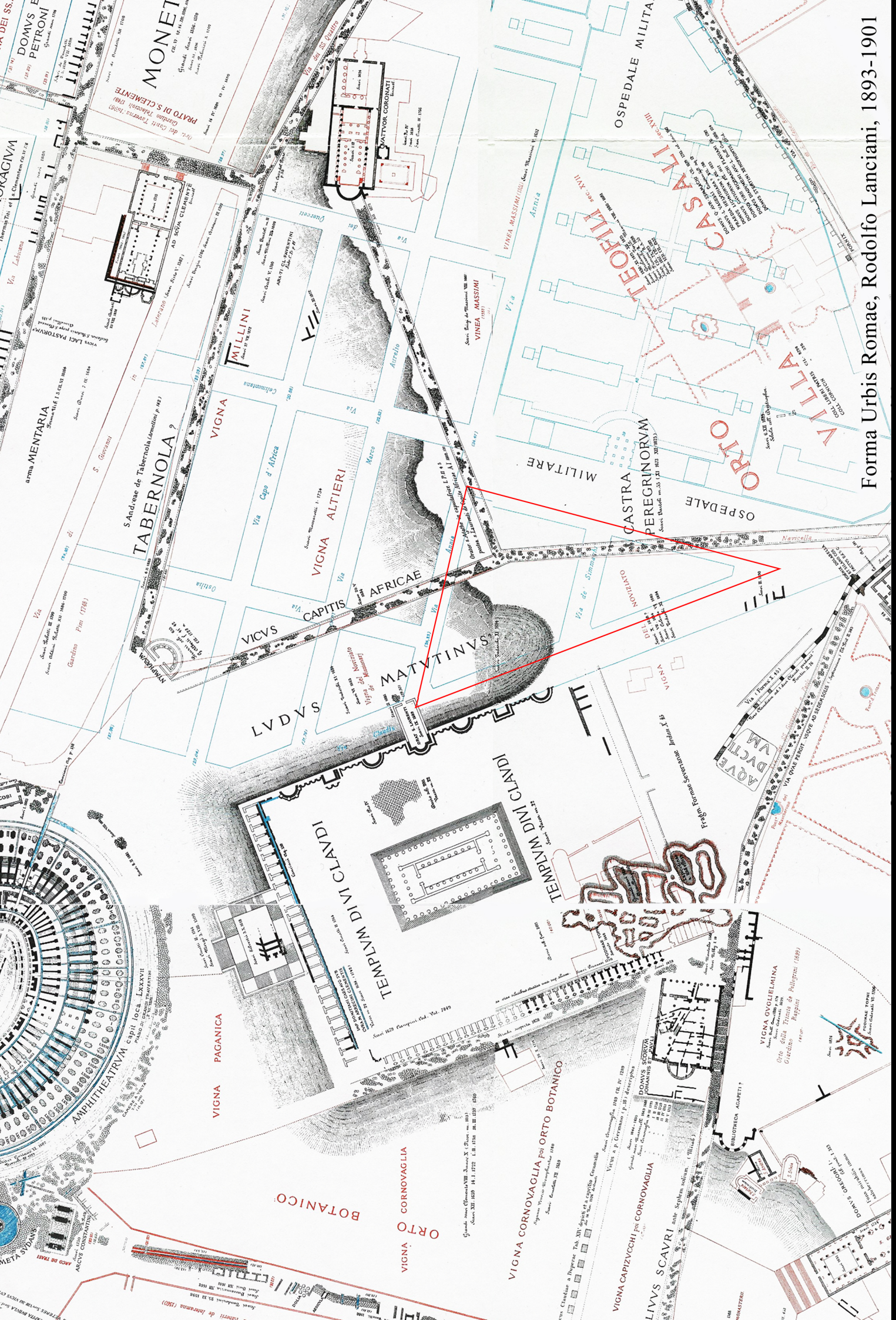
Parking area 2100sqM





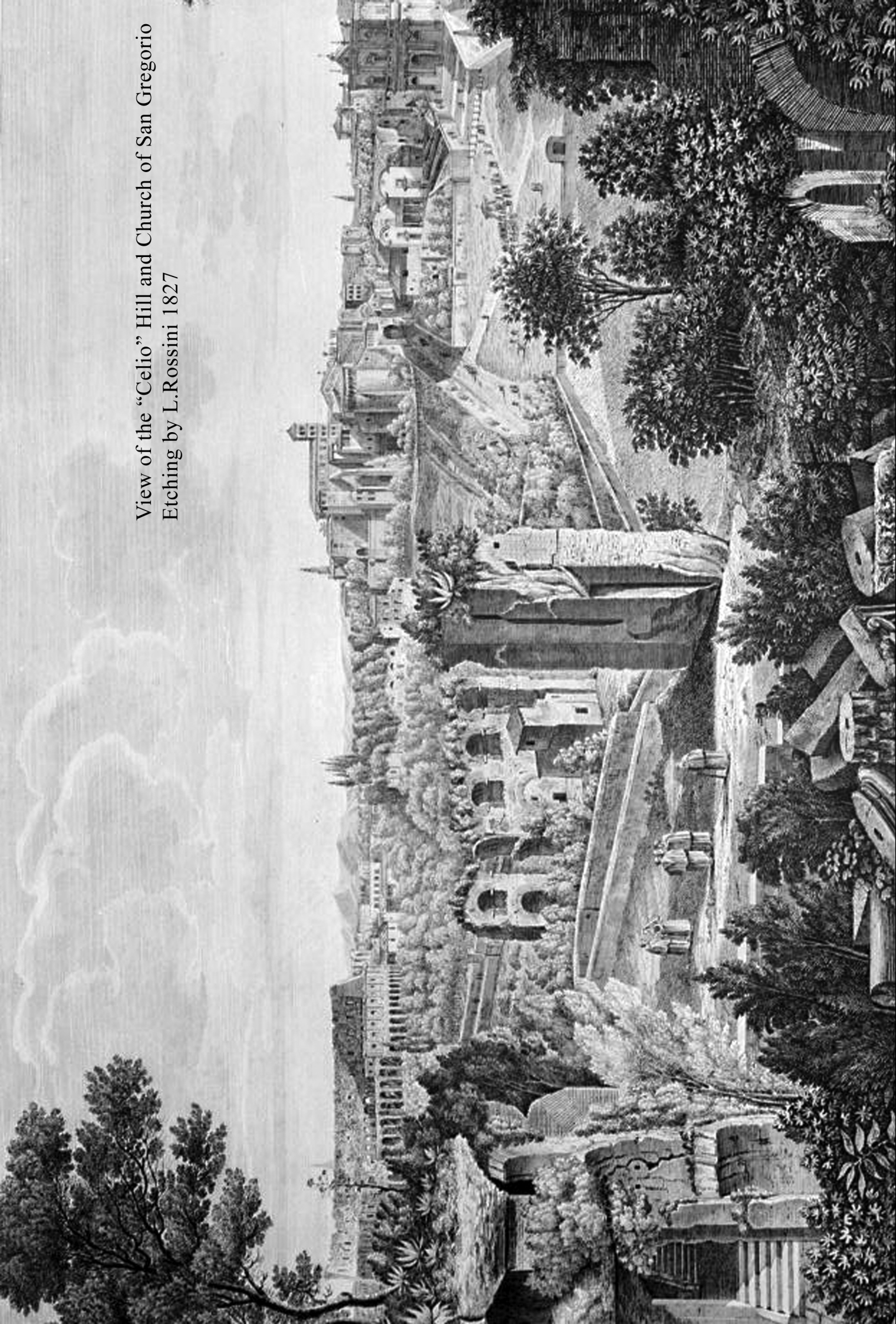
Caelian Hill, 1st century AD



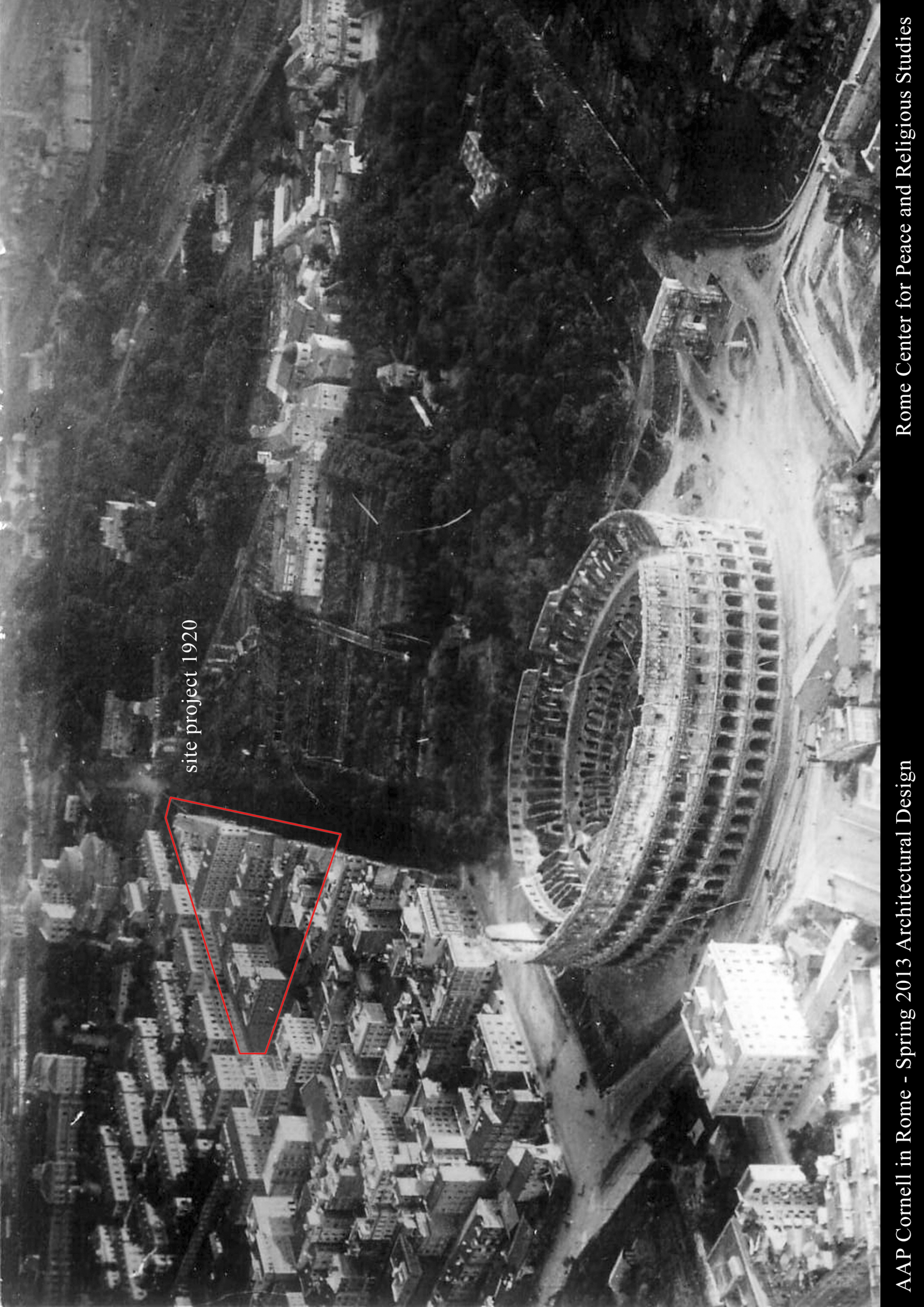




View of the "Celio" Hill and Church of San Gregorio  
Etching by L. Rossini 1827

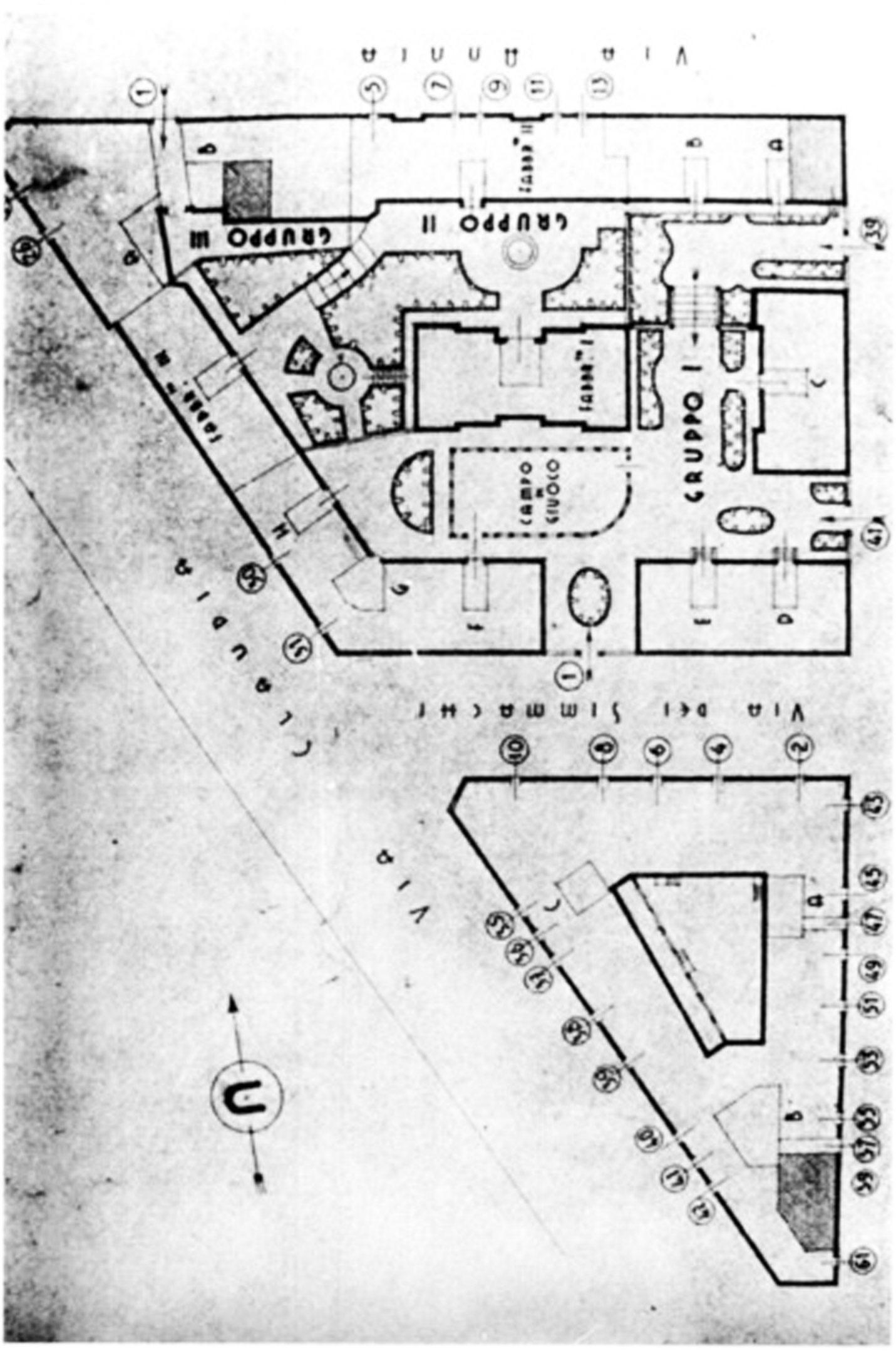






site project 1920





Existing buildings on the site, plan 1890-1908